

**480**  
Watts

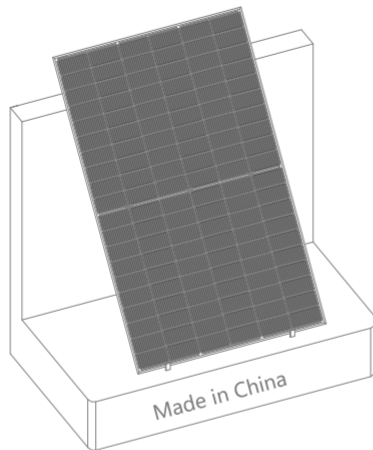
Efficient photovoltaic modules

**12**  
years

product warranty

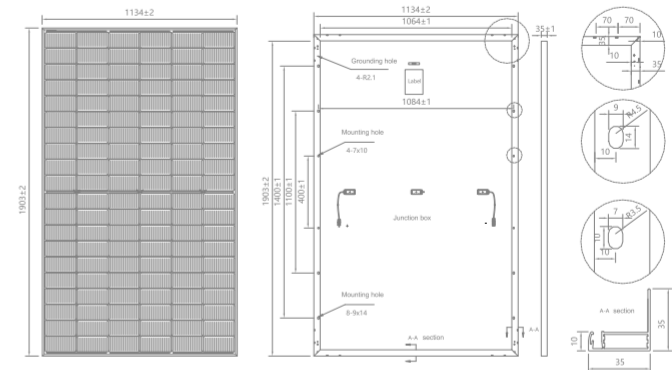
**25**  
years

Limited power warranty of 84% of the minimum specified power rating



### Dimensions of PV Module(mm):

Dimensions:	1903*1134*35mm
Weight:	24.0 kg(±3%)



### Electrical specifications:

Module Type:	ZY480M10NH-120	
Nominal Peak Power:(Pmax)STC/NMOT±3%	(w): 480	359.0
Max.Power Voltage:(Vmp)STC/NMOT	(V): 36.58	34.02
Max.Power Current:(Imp)STC/NMOT	(A): 13.12	10.55
Open-circuit Voltage:(Voc)STC/NMOT ±3%	(V): 42.95	39.94
Short-circuit Current:(Isc)STC/NMOT ±3%	(A): 14.01	11.38
Module Efficiency:(nm)	(%):	22.2
Power Selection	(W):	0~+5
Operating Temperature:	(°C):	-40~+85
Max. Series Fuse Rating:	(A):	25
Max. System voltage:(DC)	(V):	1500

STC: rradiance 1000 W/m<sup>2</sup>,module temperature 25°C,AM1.5;  
NMOT: rradiance 800 W/m<sup>2</sup>,module temperature 20°C,AM 1.5,wind speed 1 m/s.

### Mechanical Specifications

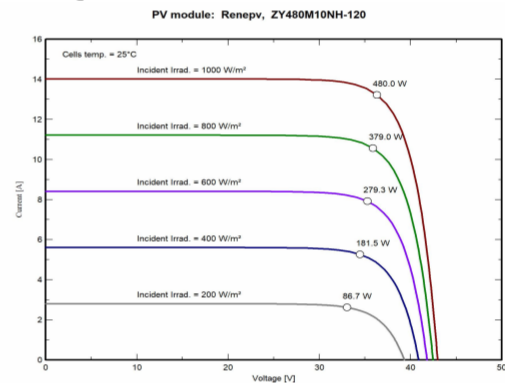
Solar Cell:	N-Mono-182*91
Arrangement:	Type-6*10*2
Front Glass:	3.2mm tempered glass
Frame:	Anodized aluminium alloy
Junction Box:	IP68,3 diodes
Cables& Connectors:	4.0mm <sup>2</sup> &PV-CXLH0601-1
Manufacturer of connector&Junction Box	Ningbo Lihui photovoltaic Technology Co.,Ltd
Maximum Load Capacity	5400Pa/2400Pa
Safety Rate	Class II (IEC)
Fire Rate	Class C (TUV)

### Temperature characteristics

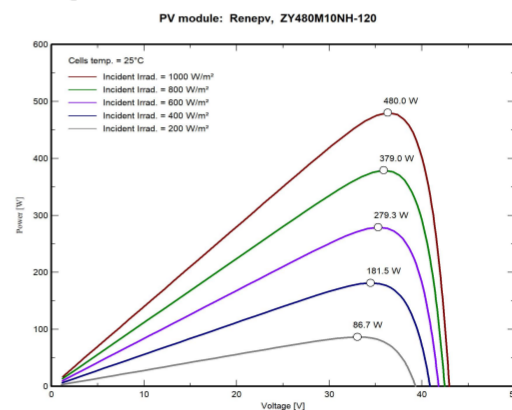
Temperature Coefficient (Pmax):	-0.30 %/°C
Temperature Coefficient (Voc):	-0.25 %/°C
Temperature Coefficient (Isc):	+0.05 %/C
Norminal Operating Cell Temperature:	45±2 °C

### Electrical characteristics:

#### Current-Voltage Characteristic(I-V Curve)



#### Power-Voltage Characteristic(P-V Curve)



### Packing Configuration

40'HQ Container: 31pcs/pallet 24pallet/40'HQ 744pcs

TUV/IEC61215/61730 Quality / ISO Certified Company



@NINGBO ZHONGYI NEW ENERGY CO.,LTD.

Address: No.509 Zhengtong North Road,CixiCity hi-tech Industrial development zone,Zhejiang,China

Tell: +86-0574-63097968

Fax: +86-0574-63097968

Email: info@renepv.com

<https://www.renepv.com>