

565  
Watts

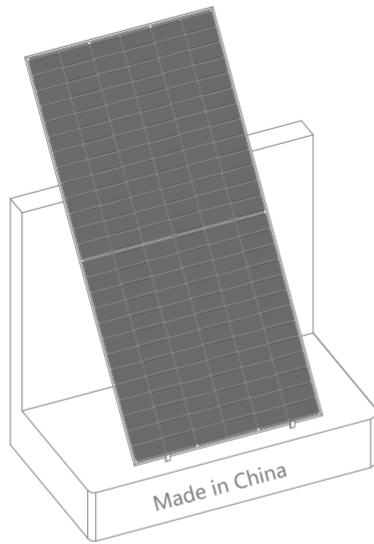
Efficient photovoltaic modules

12  
years

product warranty

25  
years

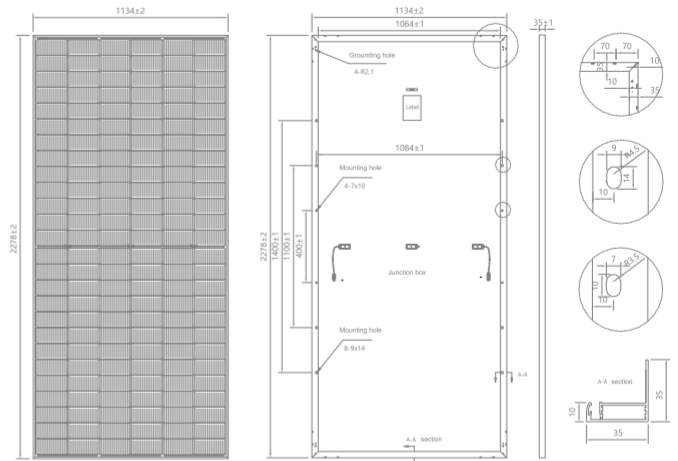
Limited power warranty of 84% of the minimum specified power rating



Dimensions of PV Module(mm):

Dimensions: 2278\*1134\*35mm

Weight: 28.0 kg(±3%)



Electrical specifications:

Module Type:	ZY565M10NH-144	
Nominal Peak Power:(Pmax)STC/NMOT±3% (w):	565	422.6
Max.Power Voltage:(Vmp)STC/NMOT (V):	43.53	40.48
Max.Power Current:(Imp)STC/NMOT (A):	12.98	10.44
Open-circuit Voltage:(Voc)STC/NMOT±3% (V):	51.18	47.60
Short-circuit Current:(Isc)STC/NMOT ±3% (A):	13.88	11.24
Module Efficiency:(nm) (%) :	21.9	
Power Selection (W):	0~+5	
Operating Temperature: (°C):	-40~+85	
Max. Series Fuse Rating: (A):	30	
Max. System voltage:(DC) (V):	1500	

STC: rradiance 1000 W/m²,module temperature 25°C,AM1.5;  
NMOT: rradiance 800 W/m²,module temperature 20°C,AM 1.5,wind speed 1 m/s.

Mechanical Specifications

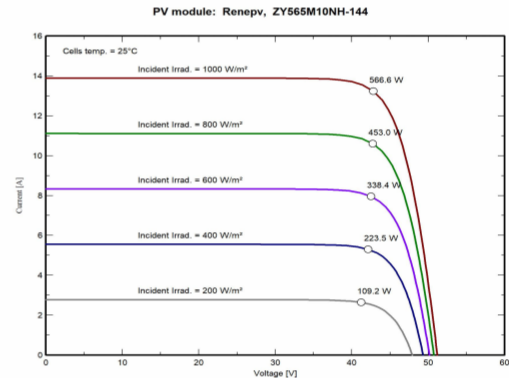
Solar Cell:	N-Mono-182*91
Arrangement:	Type-6*12*2
Front Glass:	3.2mm tempered glass
Frame:	Anodized aluminium alloy
Junction Box:	IP68,3 diodes
Cables& Connectors:	4.0mm²&PV-CXLH0601-1
Manufacturer of connector&Junction Box	Ningbo Lihui photovoltaic Technology Co.,Ltd
Maximum Load Capacity	5400Pa/2400Pa
Safety Rate	Class II (IEC)
Fire Rate	Class C (TUV)

Temperature characteristics

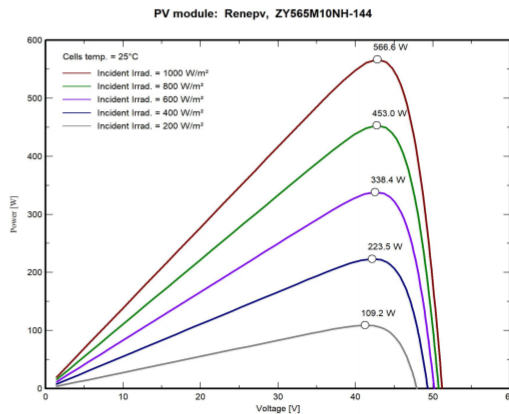
Temperature Coefficient (Pmax):	-0.30 %/°C
Temperature Coefficient (Voc):	-0.25 %/°C
Temperature Coefficient (Isc):	+0.05 %/°C
Norminal Operating Cell Temperature:	45±2 °C

Electrical characteristics:

Current-Voltage Characteristic(I-V Curve)



Power-Voltage Characteristic(P-V Curve)



Packing Configuration

40'HQ Container: 31pcs/pallet 18pallet/40'HQ 620pcs

TUV/IEC61215/61730 Quality / ISO Certified Company



@NINGBO ZHONGYI NEW ENERGY CO.,LTD.

Address: No.509 Zhengtong North Road,CixiCity hi-tech Industrial development zone,Zhejiang,China

Tell: +86-0574-63097968

Fax: +86-0574-63097968

Email: info@renewpv.com

<https://www.renewpv.com>